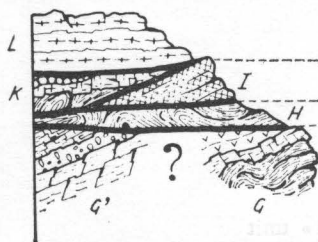


**SCHEME OF THE GEOMETRICAL RELATIONSHIPS AMONG THE TECTONIC UNITS OF THE CALABRIA-LUCANIA APENNINES**

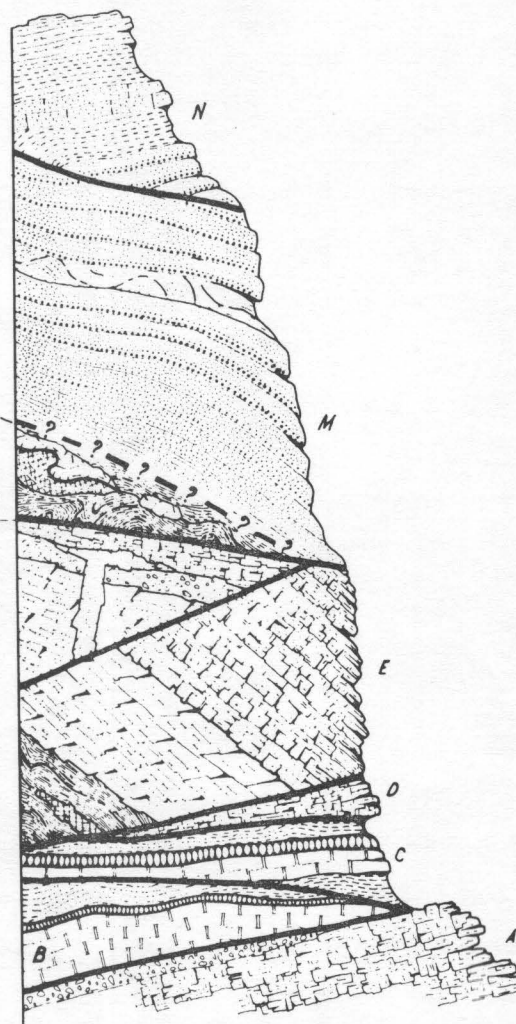
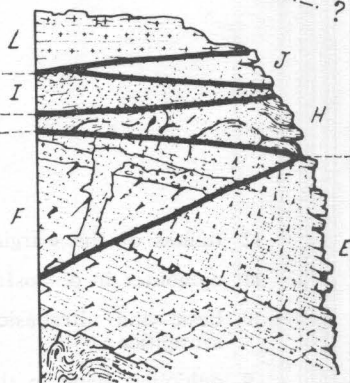
- N "argille varicolori", unit
- M Cilento Flysch unit
- L "formazione dioritico-kinzigitica",
- K Bagni River radiolarite-phyllite unit
- J Ophiolitic unit II
- I Ophiolitic unit I
- H Frido unit
- G' dolomites and limestones of the Terme Luigiane, Monte Cocuzzo etc. windows
- G phyllites and evaporites of the Cefraro window
- F Verbicaro unit
- E Campotenese-Pollino unit
- D Timpone Pallone unit
- C Lagonegro unit II
- B Lagonegro unit I
- A Monte Alpi unit

**NORTHEASTERN CALABRIA AND SOUTHERN LUCANIA**

**CALABRIAN COASTAL CHAIN SOUTH OF THE SANGINETO LINE**



**CALABRIAN COASTAL CHAIN NORTH OF THE SANGINETO LINE**



- |  |                                 |  |  |
|--|---------------------------------|--|--|
|  | tuffites                        |  | calcareous and dolomitic breccias, conglomerates   |
|  | claystones and marls            |  | evaporites   |
|  | graded sandstones               |  | pelagic limestones   |
|  | olistostromes and mud flows     |  | dolomites  |
|  | graded calcareous microbreccias |  | radiolarites   |
|  | shallow water limestones        |  | gneisses   |
|  | overthrust surfaces             |  | serpentinites, glaucophane schists, greenschists and associated calcareous schists and phyllites; prasinites of the Campotenese-Pollino unit |
|  | uninterpreted contacts          |  | diabases, pillow lavas, pillow breccias and associated sediments; "limburgites", of the Verbicaro unit                                       |
|  |                                 |  | slates and phyllites   |

m  
1000  
500  
0

PLATE 1

- 12 tuffites of the « argille varicolori » unit
- 11 ophiolites in olistostromes of the Cilento Flysch unit
- 10 basic and ultrabasic rocks of the « formazione dioritico-kinzigitica »
- 9 ophiolites lying in the Frido complex
- 8 diabases, pillow lavas and pillow breccias belonging to the ophiolitic unit II
- 7 ophiolites of the Diamante-Terranova da Sibari sequence (ophiolitic unit I)
- 6 ophiolites of the Fuscaldo-Rose sequence (ophiolitic unit I)
- 5 ophiolites of the Monte Reventino-Gimigliano sequence (ophiolitic unit I)
- 4 « limburgites » of the Verbicaro unit
- 3 prasinites of the Campotenese-Pollino unit
- 2 tuffites of the Lagonegro unit II
- 1 diabases, pillow lavas and pillow breccias probably belonging to the Lagonegro unit II